



isyVmon extensions allow you to extend your IT monitoring with useful features. Of course, including professional support.

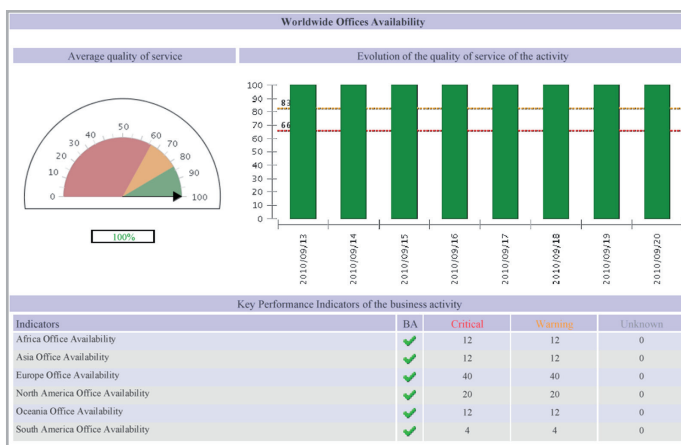
Business Intelligence & Activity Monitoring

The fusion of IT vision and process-oriented view of business applications in one central tool allows the interpretation of the availability for both management and IT staff. This is a new quality in service delivery.

Therefore isyVmon provides two additional modules. Business Activity Monitoring (BAM) and Business Intelligence (BI). BAM provides real-time evaluation of aggregated states of the monitored systems and applications and the definition of parent processes (Service Delivery).

By mapping the systems and applications of the IT infrastructure to the business process logic a holistic view results. IT staff and management alike recognize the impact of a system failure on the availability of a business process and can initiate reactions.

For compliance reporting, uniform metrics and key performance indicators (KPI) can be defined and monitored automatically.



Features of the Business Intelligence (BI):

BI provides a powerful reporting engine for creating meaningful and customizable reports on the availability and performance of the monitored IT.

- Deep inspection of the collected data
- Reports on the availability and performance of your systems
- Task Scheduling Manager for automated reporting
- Hierarchical views and display filters offer quick access to important data and reports
- Extensive reporting templates for further use
- Reporting in various formats, e.g. HTML, DOC, XLS, PPT, PDF



Features of the Business Activity Monitoring (BAM):

- Real-time recording of production parameters
- Analysis of business activity based on Key Performance Indicators (KPI)
- Flexible and automated KPI configuration
- Normalization, scaling and aggregation of the measured values [0-100%] to proof the service quality
- Definition of real-time indicators on macro level

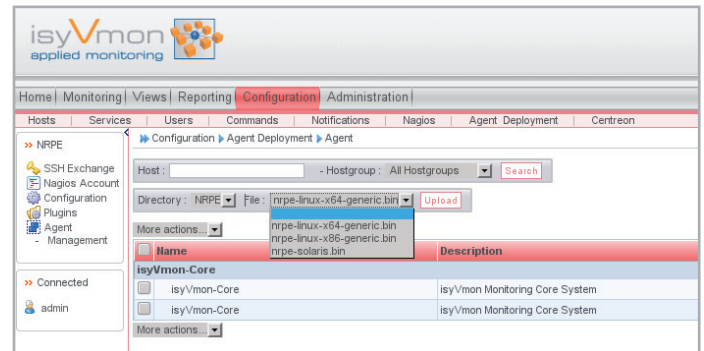


Agent Deployment Tool

The Agent Deployment Tool (ADT) is a Linux management tool to distribute monitoring agents on server systems to be monitored.

SSH provided - with ADT you can distribute and maintain not only the agent itself but also its configuration as well as plugins via a central management. Of course, fully integrated into isyVmon.

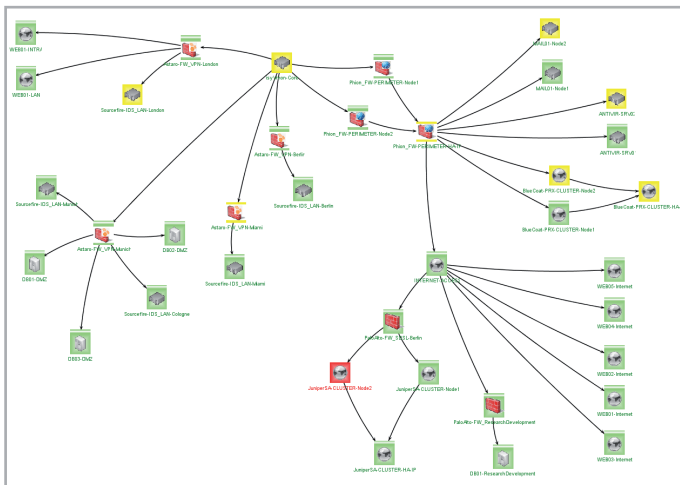
Vulnerabilities in NRPE? Your plugin has evolved and now you want to roll it out for all of your systems? With ADT, no problem.



Extended Status Map

The Extended Status MAP (ESM) provides a detailed graphical representation of hosts and services with a variety of additional features that make it different from the generic Nagios MAP.

In addition to the intuitive operation (e.g. by drag & drop functionality) features like dynamic zooming, different customizable views and the ability to start out actions directly from the ESM lead to a high level of user friendliness that illustrates the significant value of this extension.



Easy and direct access to:

- All service/host status information
- View, add and delete comments
- Action URL host/service
- Notes URL of host/service
- All services of a host
- All hosts of a hostgroup
- Direct link for displaying the current host/service in isyVmon main GUI
- Removing acknowledgements

Best user experience:

- Dynamic zooming
- Arrange your hosts with simple mouse dragging on the map
- Create backgrounds with different colours
- Integrate text with font scaling
- Panning and different customizable views
- Easy handling for large setups (hundred of hosts and more)
- User notification by blinking

Enables massive actions for:

- Scheduling downtime
- Acknowledgements

iT-CUBE Distribution GmbH
 Paul-Gerhardt-Allee 24
 81245 Munich
 Germany

T: +49 (0) 89 2000 148 04
 F: +49 (0) 89 2000 148 29
 info@isyVmon.com
 www.isyVmon.com

